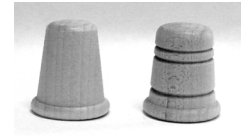




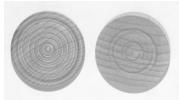
TS-138 TS-1 TS-112 TS-6 TS-3

SPOOLS



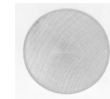
T-1P and T-1G

THREAD SPOOLS		EA	50	100	500	1000
TS-1	7/8" X 1-1/8"	\$0.15	\$6.50	\$10.00	\$47.50	\$90.00
TS-2	7/8" X 1-1/8"	0.15	6.50	10.00	47.50	90.00
TS-3	1/2" X 1/2"	0.10	3.00	5.00	20.00	30.00
TS-4	1/2" X 5/8"	0.10	3.50	5.50	22.00	35.00
TS-5	5/8" X 3/4"	0.10	4.00	6.00	25.00	40.00
TS-6	3/4" X 1"	0.10	4.50	8.50	37.50	65.00
TS-7	3/8" X 1/2"	0.10	2.50	4.00	15.00	25.00
TS-114	1-1/4" X 2-1/8" W/ 5/16"HOLE	0.40	19.25	35.20	159.50	286.00
TS-112	1-1/2" X 2-1/8" W/ 5/16"HOLE	0.55	25.00	45.00	190.00	350.00
TS-138	1-3/8" X 1-15/16" W/ 5/16"HOLE	0.45	20.00	38.00	170.00	300.00
T-1G	Thimble Grooved	0.20	9.00	16.00	70.00	120.00
T-1P	Thimble Plain	0.20	9.00	16.00	70.00	120.00



WSC-14 WC-1

GAME PIECES



WN-1



CP-1

CHECKERS		EA.	50	100	500	1000
WC-1	1" X 5/16"	\$0.10	\$4.50	\$8.00	\$35.00	\$55.00
WC-4	1-1/4" X 5/16"	0.15	6.00	10.00	42.50	75.00
WSC-14	1-1/4" STACK	0.20	8.00	14.00	60.00	110.00
WSC-14C	1-1/4" Stackable Clear finish	0.20	8.50	15.00	65.00	120.00
WOODEN NICKEL		EA.	50	100	500	1000
WN-1	1" X 1/8"	\$0.10	\$3.00	\$5.00	\$22.50	\$43.00
WN-114	1-1/2" X 1/8"	0.10	4.00	6.50	30.00	55.00
GOLF TEE		EA	100	500	1000	
GT-1	Unfinished	\$0.05	\$4.50	\$17.00	\$32.00	
GT-1PS	Painted, Seconds	0.05	4.50	17.00	32.00	
GT-1S	Stubby Painted Golf Tee	0.05	3.00	10.00	18.00	
CRIBBAGE PEGS, 1/8" dia. at base, 1/4" dia. at top, 1-1/4" L		EA.	50	100	500	1000
CP-1	Unfinished	\$0.10	\$4.50	\$7.50	\$30.00	\$50.00
CP-1S	Walnut stain, clear coated	0.12	5.00	9.00	35.00	55.00
TOSS RING		EA.	50	100	500	1000
TR-134	1-3/4" O.D. X 1" ID	\$0.30	\$12.50	\$24.00	\$110.00	\$200.00
GAME PAWNS		EA.	50	100	500	1000
GP-1	11-Colors	\$0.12	\$5.00	\$9.00	\$42.50	\$80.00
White, Yellow, Light Blue, Dark Blue, Green, Orange, Red, Black, Purple, Natural, Unfinished. All Pawns are 5/8" dia. and 1-3/16" tall						
SPINNING TOP		EA	6	12		
TOP-218	Colored, 1-37/64 X 2-1/8"	\$2.00	\$10.80	\$19.20		
YO-YO	YO-YO unfinished with string	1.00	4.50	7.80		



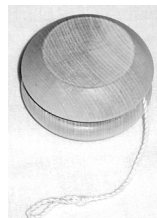
GP-1



TR-134



GT-1



TOP-218